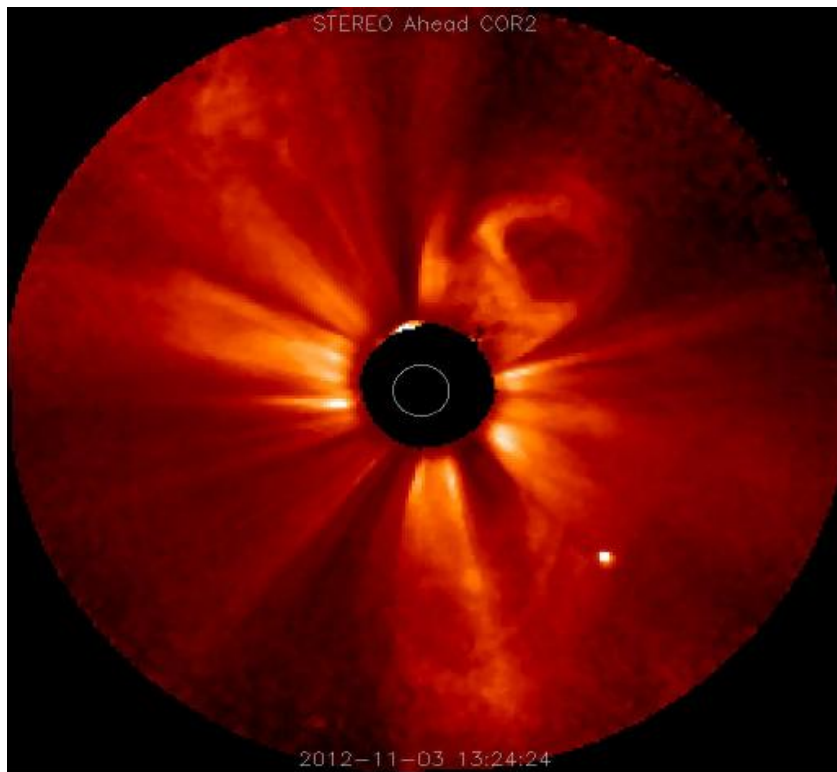


Mini-Forbush on Nov 6-7, 2012. Origin CME on Nov 3, 2012

A Coronal Mass Ejection on Nov 03, 2012 at 1324 UTC was visible in the latest STEREO imagery. Because the eruption took place beyond the western limb, the plasma cloud was directed away from Earth. This event was the result of a prominence eruption.



Time profiles on Nov 6-7, 2012: ACE spacecraft solar wind parameters (two first panels). Tupi West 45 degree telescope muon counting rate (third panel). Delay time between ACE and Tupi signal was 1.28 hours

