

# Building the pyramid boxes of the detectors



# Building the pyramid boxes of the detectors

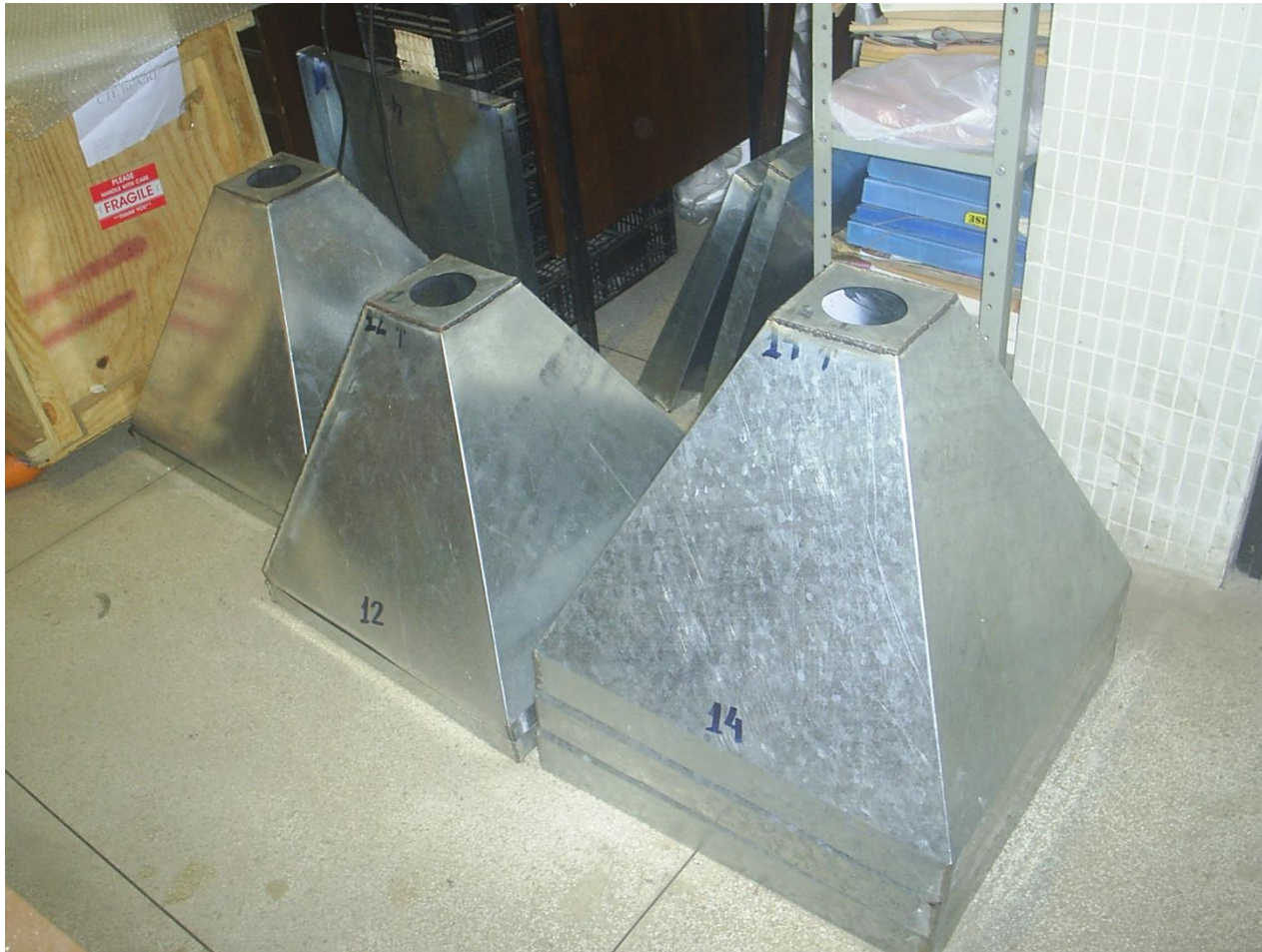




# Building the pyramid boxes of the detectors



# Pyramid boxes of the detectors



# Mounting a telescope





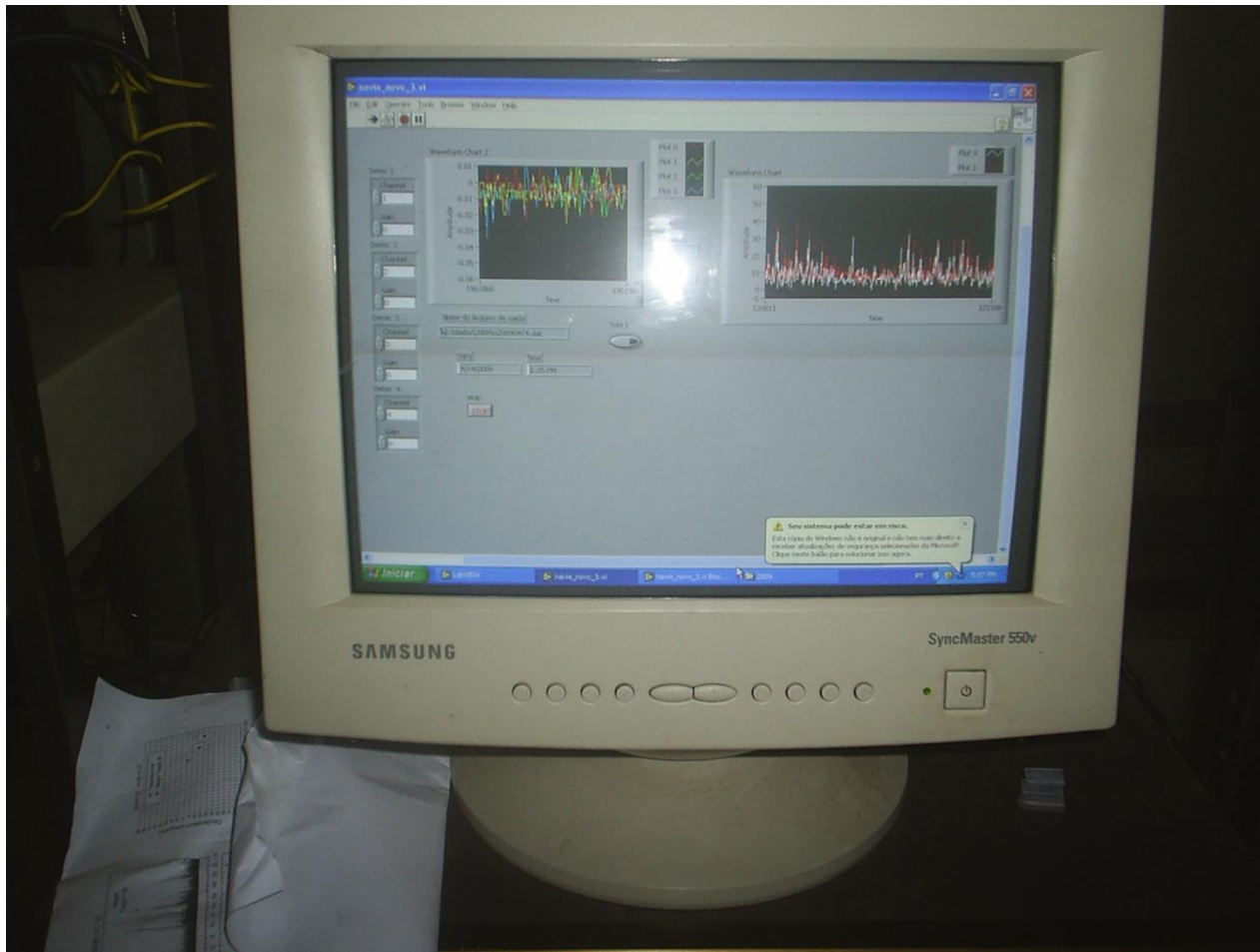
# Ready-made telescope



# Telescope inclined (45 degrees) on the South direction



# First screen (LabVIEW) of data acquisition control

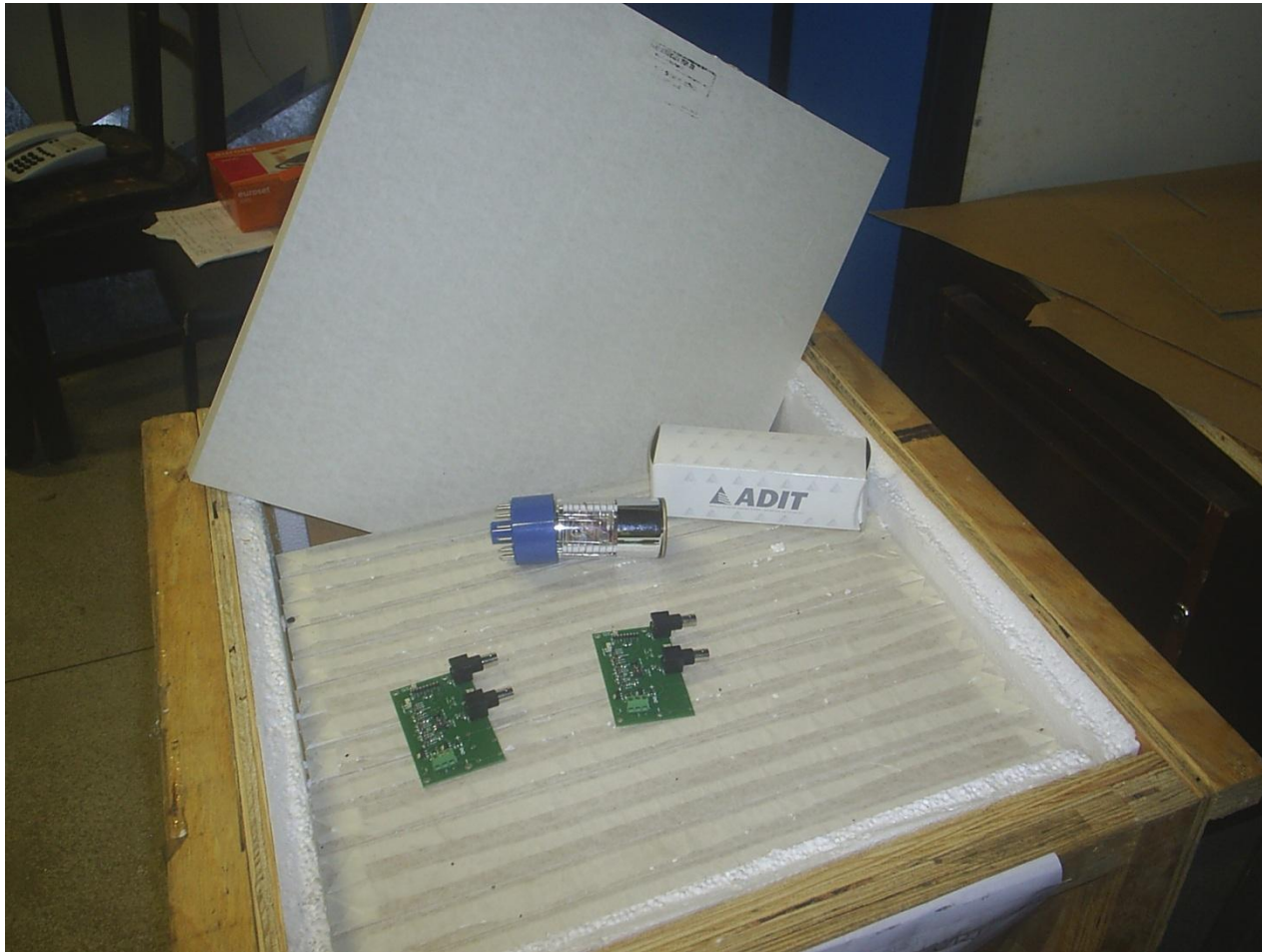




# Power sources and new data acquisition module

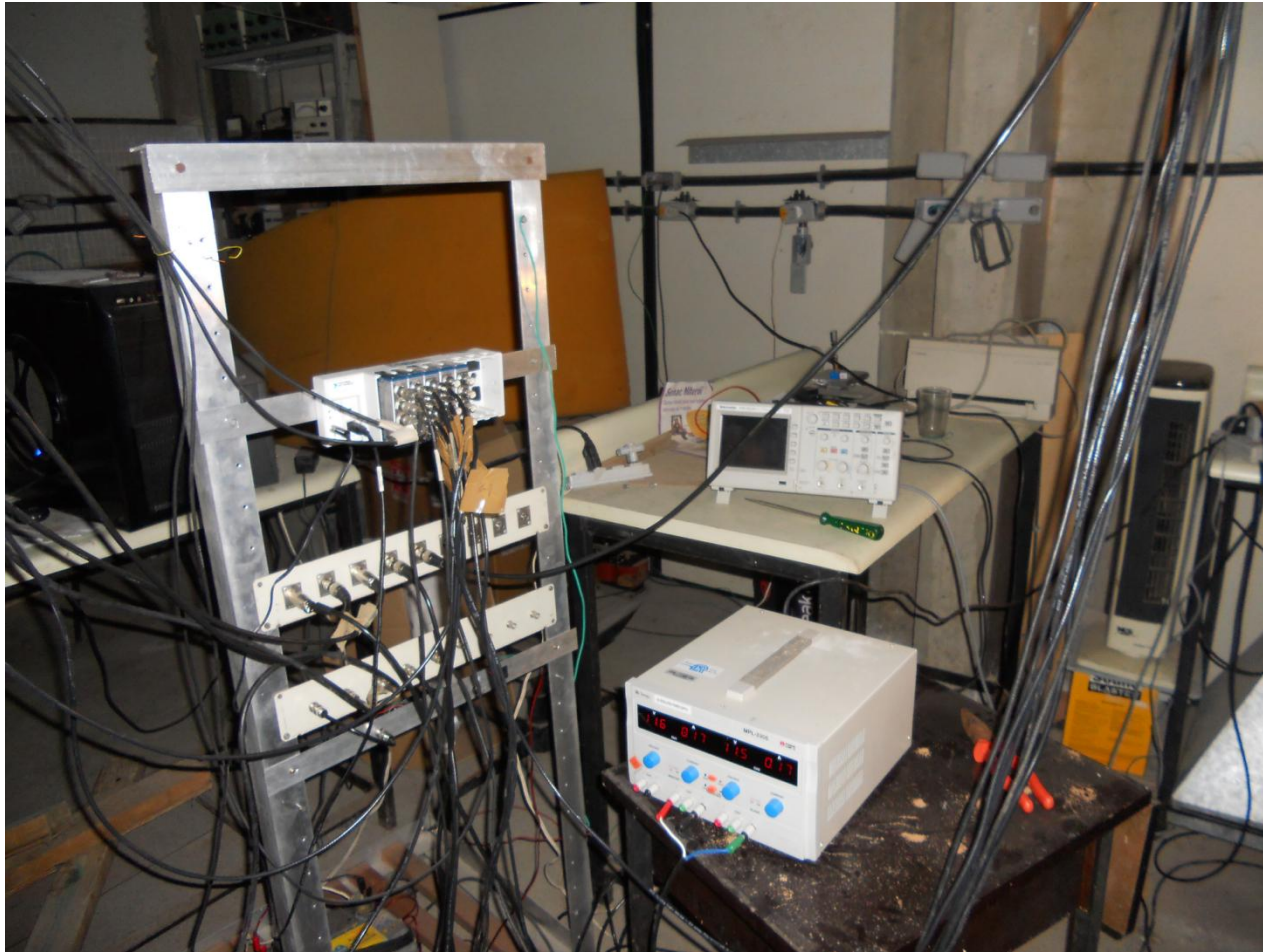


# Plastic Scintillators and photomultiplier





# Control rack



# Meeting of the Group (Campinas SP Brazil Jun, 2012)





# Meeting of the Group (Campinas SP Brazil Jun, 2012)

